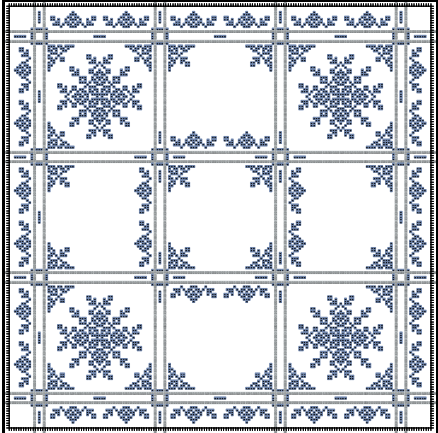
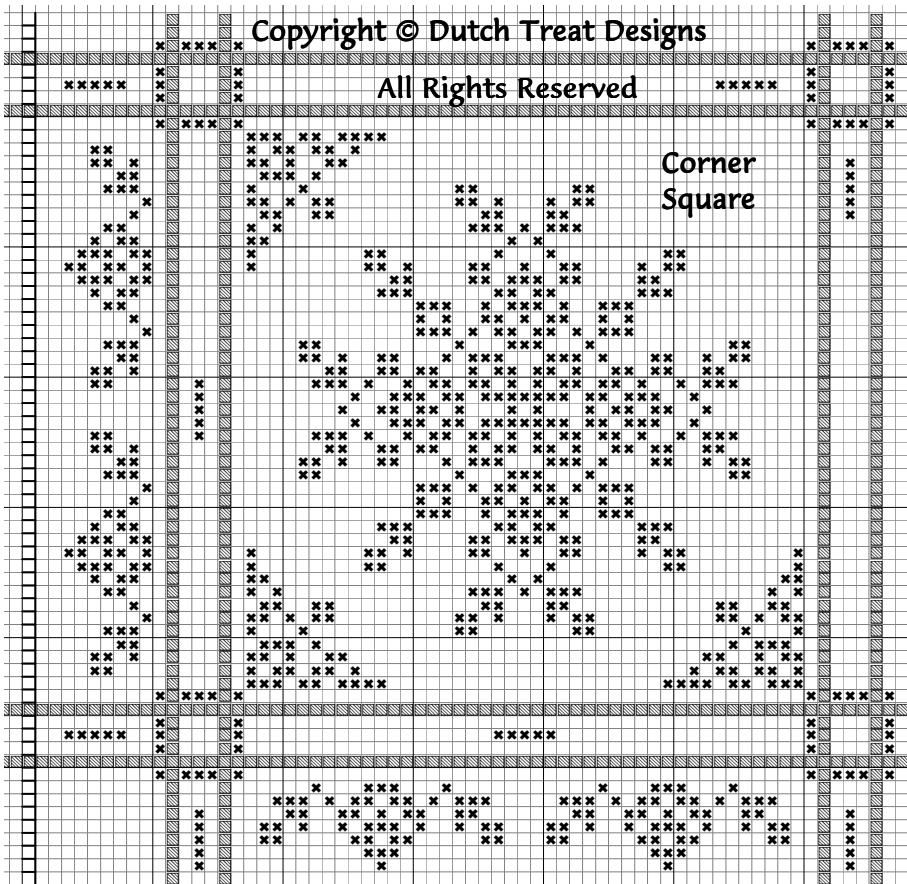


Northern Frost

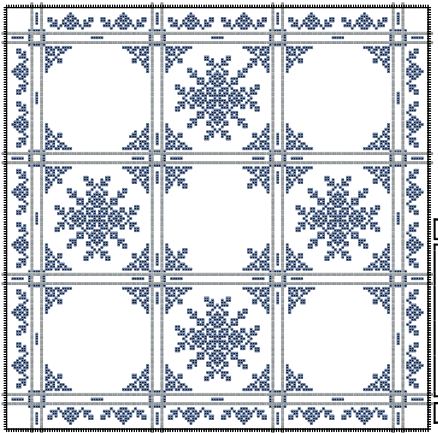
4 SQ Doily or 9 SQ Tabletopper

This design may be photocopied and shared.

This design is worked over 2 threads on Zweigart's 18 count Anne Cloth fabric using size 5 and 12 pearl cottons. Stitch on the side of the fabric where the woven borders are solid. This doily or tabletopper is finished with a Nun stitched edge and then fringed. This design can be stitched using only one color or with more colors. This one takes LOTS of thread, so be sure to buy enough of whatever color(s) you choose.



For a 9 SQ Tabletopper
Here are two design options
which use the ice crystal motif



Materials Needed

Fabric: 18 ct. Anne Cloth
4 SQ doily or 9 SQ tabletopper in antique white or the color of your choice

Symbols & Threads:

Size 5 Pearl Cotton

- stitch with 1 strand
- use a size 22 tapestry needle
- ✕ color(s) of your choice

If you stitch with only one color you will need 3-4 skeins. For multiple colors you will need 1-2 skeins of each color you use.

Size 12 Pearl Cotton

- Used for the Nun stitch edge
- stitch with 1 strand
- use a size 24 tapestry needle

- TTT match to fabric or use a contrasting color
- ▨ denotes the woven border of the Anne Cloth

Stitching Suggestions

This design reminds me of ice crystals. in the frozen north. Although not a true snowflake, it could be the perfect design to stitch on a cold Winter day. Purchase lots of thread and have fun with this one.

Claudia

For a 4 SQ doily - stitch the Corner Square design in all four squares.
This design can also be stitched as a border-only design by stitching just the bottom and corner borders, not the ice crystal motif.

Dutch Treat Designs
P.O. Box 161
Livermore, CA 94551-0161
<http://www.dutchtreat.com>