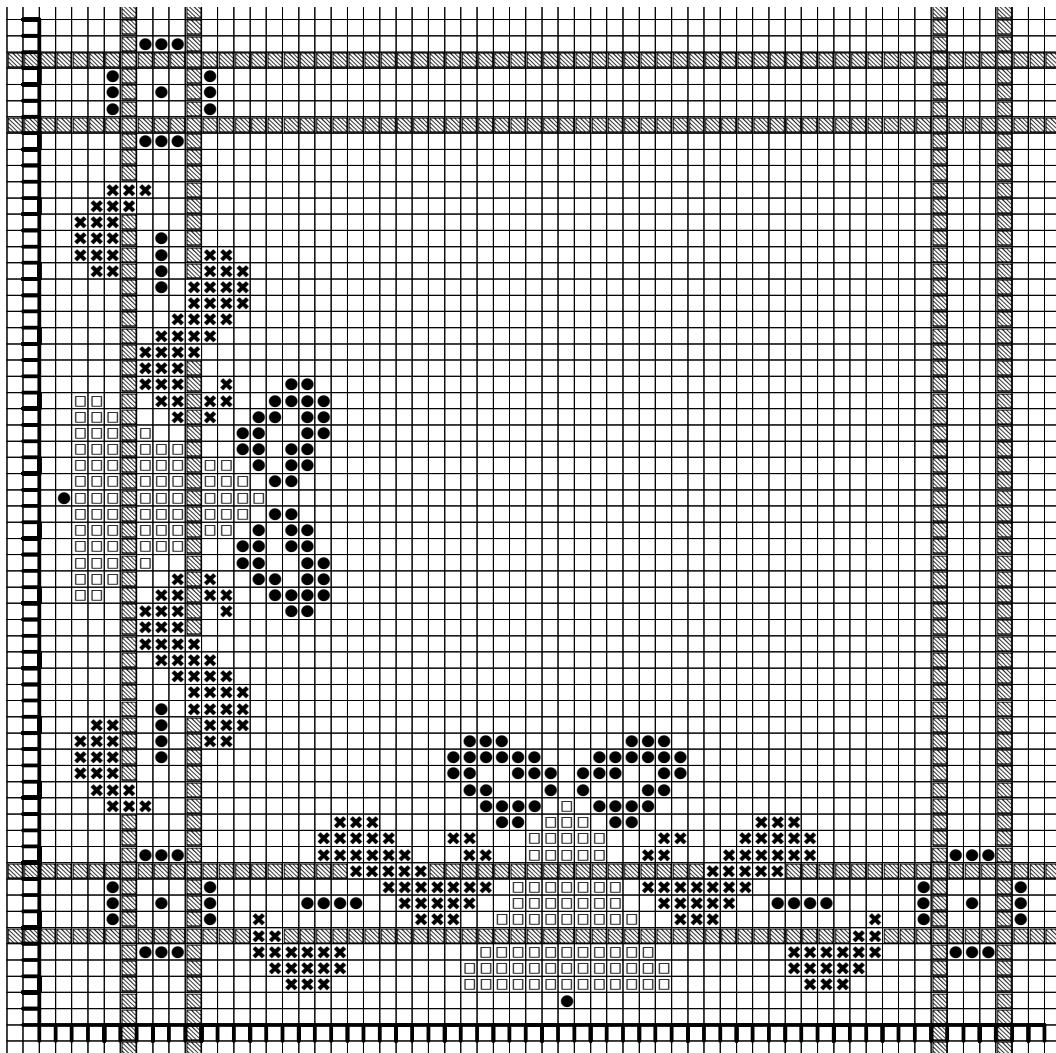


Christmas Bells 2005

4 square doily

Materials Needed

Fabric:	Anne Cloth 18 ct. white or ivory 4 square doily	
Size:	Stitch count 113 x 113, approximately 16 x 16 inches	
Needles:	#22 tapestry needle, #24 tapestry needle	
Symbol	location	on white or ivory fabric
✕	ribbon	Watercolours 065 Emerald OR DMC 699
□	bells	DMC 977 gold
●	bow/accent color	Anchor 7046 red/gold OR DMC 321
TTT	1 ball size 12 pearl cotton for the Nun stitched edge Blanc on white; Ecru on ivory	
▨	denotes the woven border of the Anne Cloth	



Copyright © 2005 Dutch Treat Designs
Shops and guilds may photocopy this design for free distribution.

Nun Stitched Edge

The Nun stitch is a finishing stitch that, when completed, will keep your piece from unraveling. It is a pulled stitch, using one strand of size 12 pearl cotton with a #24 tapestry needle. The Nun stitch looks like a backward "C". It is an "over two" stitch. See the stitch diagram for instruction and the pattern chart for placement. **The arrows on the stitch diagram are for stitch direction only.**

Begin by pulling out the fifth thread beyond the end of the bell clapper. This will leave two threads between the bottom of the bell and the inside edge of your Nun stitch. The "ditch", the vacant thread track, will mark the outer boundary for your Nun stitch. Begin stitching on the upper left side with the front of the doily facing you. Bring your thread up in the "ditch" to start. When you reach the woven borders of the Anne Cloth, treat them as if they are two threads. When you arrive at the corner, turn the fabric one quarter turn clockwise. The back of the "C" now becomes the top of the "C" on the new side.

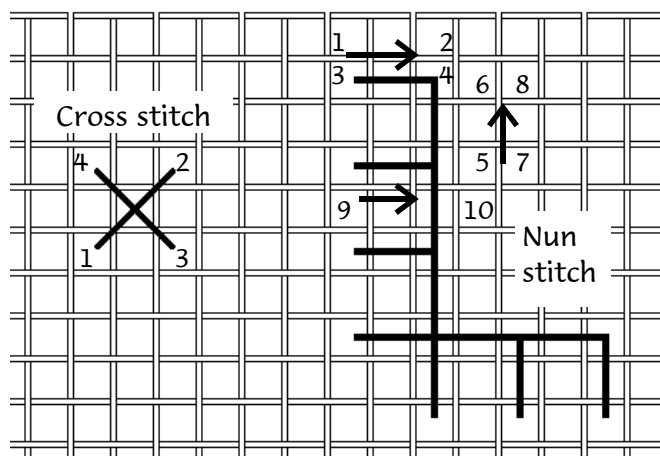
Fringing

Pull out the 15th thread on the outside of the finished Nun stitched edge. Use this as a cutting guide to even up the fabric so that all four edges will be the same width. Fringe by pulling out the long threads parallel to the Nun stitched edge. This doily can be machine washed.

Dutch Treat Designs
P.O. Box 161
Livermore, CA 94551-0161
925-294-8621 / 866-237-3069
<http://www.dutchtreat.com>

*We all know that you can never have
too many doilies for Christmas!*

Stitch Diagrams



Copyright © 2005 Dutch Treat Designs
All rights reserved.

How to stitch the doily:

This doily design is stitched using one strand of size 5 pearl cotton or one ply of the 3 ply Caron Watercolours thread over two fabric threads on the Anne Cloth. When working with the Caron Watercolours thread, complete each stitch as you go for best color flow. The chart is graphed so that each square represents two threads. The stitch diagrams are graphed over one thread. Stitch on the side of the Anne Cloth where the woven borders are solid.

Repeat the design as shown in the chart in all four squares of the Anne Cloth. Stitch the pattern by sides. Start in the corner and work across both squares on a side. Turn the fabric 1/4 turn after each side is completed. Working the pattern by sides will make the doily easy and fun to stitch. Nun stitch the outside edge of the fabric when you have finished stitching the design.

Acknowledgments

Pearl cotton from The DMC Corporation
and Anchor / Coats and Clark
Watercolours Thread from The Caron Collection LTD.
Anne Cloth from Zweigart

If your local needlework store does not carry the supplies to stitch this doily, please contact Dutch Treat.