

M H Smith 1890 sampler chart corrections for the FIRST PRINTING of the chart
which was released only through Sassy Jacks in October 2019

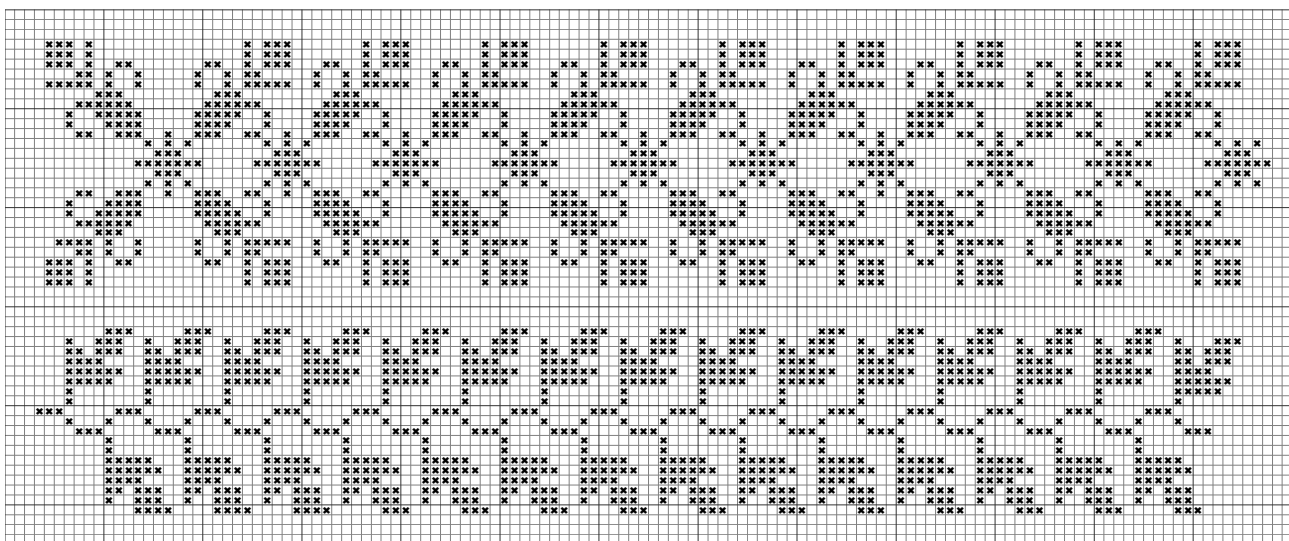
If you have the second printing of this design the chart has been corrected.

The corrections are in three bands located on pages 3 & 4 of the chart.

These two bands are in the Middle right section on page 4 of the chart.

The location and placement of the two bands in the sampler is correct.
There were some added and missing stitches in the first printing.

In this section the “spokes” were not all the same as originally charted. This correction shows how Miss Smith stitched them. If you have already stitched this section, I would leave the spokes as you did them. The first spoke on the far left is how they all “should” have been stitched according to an original antique 1800’s printed pattern.



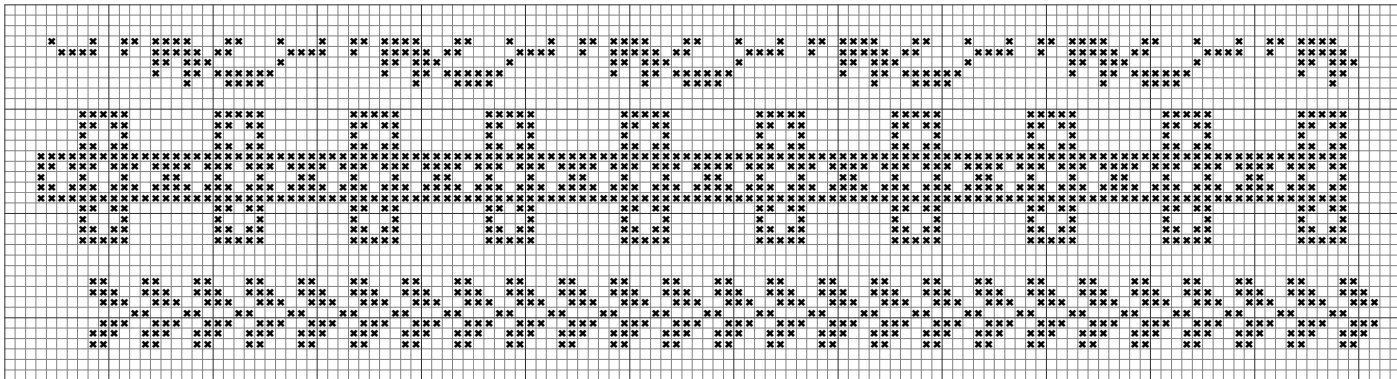
In the “leaves” band there are two missed stitches in each leaf on the top row. If you have already stitched this section, you can just add the two upper stitches or leave it as you stitched it.

M H Smith 1890 sampler chart corrections for the FIRST PRINTING of the chart
which was released only through Sassy Jacks in October 2019

If you have the second printing of this design the chart has been corrected.

This band is located in the Middle left section on page 3 of the chart.

The location and placement of the right side of the band has been moved one stitch to the left. There was an extra column in the right area of the band in the first printing. Below is the corrected band located as Miss Smith stitched it. The designs above and below this band are correct as charted in the first printing.



The Stars in the lower left motto section, shown on page 5 of the chart, are “short”.

The location is correct. The bottom of the stars is short. They should look like the stars in the right motto section, shown on page 6 of the chart. You will see the difference.

What we know now, from finding some of the original 1800's printed patterns for the alphabets, motifs etc. that were used in Bristol samplers, is that every girl stitched their sampler slightly differently than the pattern. If you look at the same design stitched in different samplers, most of the time something is different. This is not an excuse to not “get it right” for a reproduction sampler chart, but is an encouragement to make each sampler you stitch YOUR sampler. The orphan girls were not perfect stitchers. We honor them by repeating their work. Have fun with your version of M H Smith, with your intentional or unintentional changes. She is happy you chose to repeat her work and might even be happy that you corrected the “mistakes”.